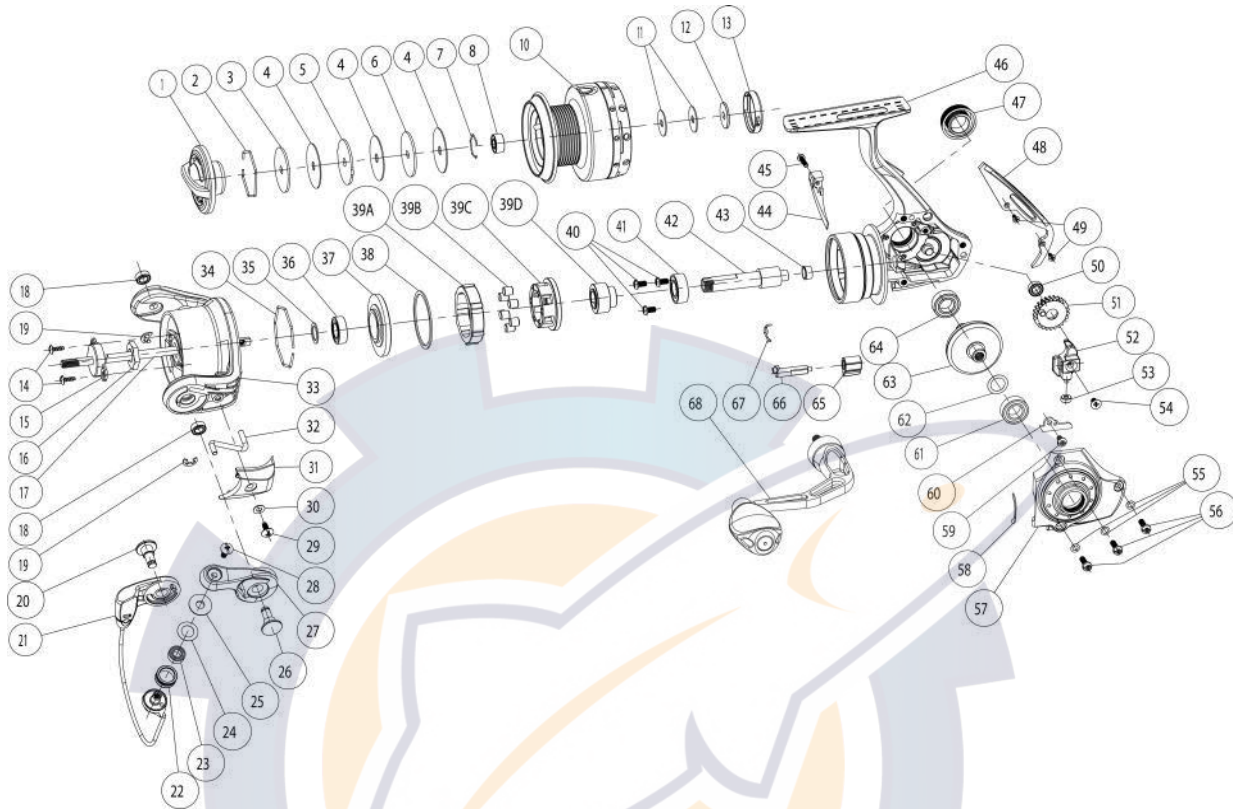


QUANTUM

Tour Edition PT

TE10PTIB



Quantum Tour Edition TE10PTIB Spinning Reel Part List

Key #	Description	Part No.	Key #	Description	Part No.
1	DRAG KNOB ASSEMBLY	MG332-01	38	WASHER	MG069-01
2	DRAG WASHER RETAINER	RQ038-01	39	CLUTCH ASSEMBLY	MG463-01
3	DRAG WASHER "D"	SQ080-01	39-A	CLUTCH LOCK RING	N/A
4	DRAG WASHER "B" (Only 1 for 10 SIZE)	RQ033-01	39-B	CLUTCH ROLLER	N/A
5	DRAG WASHER "A"	N/A	39-C	CLUTCH ROLLER RETAINER	N/A
6	DRAG WASHER "C"	N/A	39-D	CLUTCH SLEEVE	N/A
7	SPOOL BALL BEARING RETAINER	HV080-01	40	PINION BALL BEARING SCREW	TK057-01
8	SPOOL BALL BEARING	PG027-01	41	PINION BALL BEARING	CH028-01
9	WASHER	N/A	42	PINION	MG011-01
10	SPOOL ASSEMBLY	MG321-01	43	PINION BUSHING	MG141-01
11	SPOOL ADJUST WASHER	PG030-01	44	TRIP BUMPER	MG243-01
12	SPOOL WASHER	PG080-01	45	TRIP BUMPER SCREW	AT136-01
13	SPOOL CLICK ASSEMBLY	PG4114-01	46	BODY ASSEMBLY	N/A
14	ROTOR NUT LOCK SCREW	RK094-01	47	HANDLE SCREW ASSEMBLY	BG354-04
15	MAIN SHAFT BUSHING	RQ214-01	48	BODY REAR CAP	MG250-01
16	ROTOR NUT	SH006-01	49	BODY REAR CAP SCREW	PG107-01
17	MAIN SHAFT	MG015-01	50	O/S GEAR BALL BEARING	EH158-01
18	ROTOR BALL BEARING	EH158-01	51	O/S GEAR ASSEMBLY	PQ053-51
19	E- CLIP	GH034-01	52	O/S SLIDER ASSEMBLY	MG325-01
20	PIN	QG042-01	53	O/S SLIDER BUSHING	PG227-01
21	BAIL ASSEMBLY	MG347-01	54	MAIN SHAFT SCREW	RQ100-01
22	LINE ROLLER	PQ004-02	55	SIDE COVER SCREW WASHER	RQ142-01
23	LINE ROLLER BALL BEARING	GH202-01	56	SIDE COVER SCREW	RQ057-02
24	LINE ROLLER WASHER	PQ102-51	57	SIDE COVER ASSEMBLY	MG323-01
25	LINE ROLLER COLLAR	PQ102-01	58	PAD	MG140-01
26	PIN	PG042-01	59	O/S SLIDER RETAINER SCREW	TK057-01
27	ARM LEVER ASSEMBLY	MG307-01	60	O/S SLIDER RETAINER	MG078-01
28	LINE ROLLER SCREW	AQ108-02	61	SIDE COVER BALL BEARING	CH028-01
29	ARM LEVER COVER SCREW	GU077-03	62	DRIVE GEAR ADJUST WASHER	PG105-02
30	ARM LEVER COVER WASHER	SQ142-01	63	DRIVE GEAR	PT312-01
31	ARM LEVER COVER	MG087-01	64	BODY BALL BEARING	CH027-01
32	KICK LEVER	MG019-01	65	STOPPER LEVER	PG059-01
33	ROTOR ASSEMBLY	N/A	66	STOPPER CAM	MG090-01
34	RETAINER RING	MG038-01	67	STOPPER CAM SPRING	MG089-01
35	ROTOR ADJUST WASHER	PG105-04	68	HANDLE ASSEMBLY	EP318-01
36	CLUTCH RETAINER BALL BEARING	CH028-01	69	CLUTCH RETAINER SCREW	N/A
37	CLUTCH RETAINER	MG060-01			